

ORGANIC COTTON



8001	LADIES'-T		12
8002	MEN'S-T		12
8003	LADIES'-T POCKET		14
8004	MEN'S-T POCKET		14
8005	LADIES' CASUAL-T		16
8007	LADIES' BASIC-T		18
8007G	GIRLS' BASIC-T		20
8008	MEN'S BASIC-T		18
8008B	BOYS' BASIC-T		20
8009	LADIES' BASIC POLO		32
8010	MEN'S BASIC POLO		32
8015	LADIES' SLUB-T		22
8016	MEN'S SLUB-T		22
8017	LADIES' SLUB-TOP		24
8021	LADIES' SWEAT	NEW	36
8022	MEN'S SWEAT	NEW	36
8023	LADIES' HOODY	NEW	38
8024	MEN'S HOODY	NEW	38
8025	LADIES' ZIP HOODY	NEW	40
8026	MEN'S ZIP HOODY	NEW	40
8026K	CHILDREN'S ZIP HOODY	NEW	40
8027	LADIES' T-SHIRT STRIPED	NEW	10
8028	MEN'S T-SHIRT STRIPED	NEW	10
8029	LADIES' POLO STRIPED	NEW	28
8030	MEN'S POLO STRIPED	NEW	28
8031	BIO SNEAKER SOCKS	NEW	45
8032	BIO SOCKS	NEW	45
JN873	LADIES' BIO WORKWEAR POLO	NEW	30
JN874	MEN'S BIO WORKWEAR POLO	NEW	30
MB7113	BIO COTTON BEANIE		46
MB7135	BIO COTTON HEADBAND	NEW	44
MB7312	BIO COTTON SCARF	NEW	44



DO YOU WANT TO PRESENT YOUR OWN BRAND?

Many T-shirts have a neck label of the manufacturer. That means the neck label of the manufacturer has to be detached and replaced by the requested label. With our T-shirts made of organic cotton the labels can be torn off. Therefore, our label is called „Tear off!®-label“.

We relabel the T-shirts for you with a special transfer technique (known from sports articles). Then we put your logo or your brand in the neck area of the T-shirt.

THE RIGHT SIZE FOR EVERYONE

MEN

Size	XS	S	M	L	XL	XXL	3XL	4XL	5XL	6XL
	44	46	48	50	52	54	56	58	60	62

LADIES

Size	XS	S	M	L	XL	XXL	3XL	4XL
	34	36/38	38/40	40/42	42/44	46	48	50

KIDS

Height in cm	XS	S	M	L	XL	XXL
	98/ 104	110/ 116	122/ 128	134/ 140	146/ 152	158/ 164

SOCKS

Shoe size	35-38	39-41	42-44	45-47
-----------	-------	-------	-------	-------

WE LOVE ORGANIC COTTON!

Fair, transparent, harmless.

That's what our **organic cotton** is all about.

The **naturalness** of our products is not only visible but also **perceptible** and therefore, it conveys a completely **new attitude towards life** – for our **organic cotton** is grown **without pesticides and artificial fertilizers** and **genetic engineering** is completely avoided.

That's why **we love organic fashion!**

Designed in Albstadt, South Germany

N 48° 15' 48.647" O 8° 59' 30.908"





The selection of the two brands comprises about 900 fashionable products, which are always available in a quantity of approximately 20 million pieces and a stock availability of around 98%. Extremely short delivery periods are a major plus JAMES & NICHOLSON and myrtle beach offer their customers. Service takes top priority – in day-to-day business the focus is always on the customer. That is why the quality of the product lines is the most important thing of the company philosophy – from inception to completion and beyond.



BRAND STATEMENT

Both in textile promotion and in corporate fashion wear JAMES & NICHOLSON and myrtle beach are meanwhile among the best-known and most popular brands. The product diversity of the two product lines is unparalleled and is expanded every year by around 100 fashionable novelties. In the fields of sports, leisure, business and work there is hardly any top or headgear which is not included in the diverse product line.

JAMES & NICHOLSON and myrtle beach are manufactured with social and ecological responsibility. All the textiles are REACH-compliant and manufactured according to Oeko-Tex® Standard 100. Since 1999 social and environmental aspects have been integrated into the company code of conduct. They are submitted to strict controls.



The headwear shown in the catalogue is part of our myrtle beach collection.

MADE WITH RESPONSIBILITY

SOCIAL COMPLIANCE

As members of the 'BSCI/Business Social Compliance Initiative' we commit ourselves to implementing the BSCI code of conduct as part of our business relations with our manufacturers and thus to improving the working conditions within our supply chain and to producing our textiles fairly. This includes our clear commitment to the employees' right to freedom of assembly, protection against discrimination, and an adequate remuneration, that is, at least the statutory national minimum wage.

Another central component is the occupational safety regulations. That is how we guarantee that the occupational safety regulations of the ILO (International Labour Organisation) are met. Child labour, forced labour or precarious jobs are not tolerated. Several social compliance departments in the countries of production test all the factories thoroughly and make sure that these conditions are met.



PROTECTION OF THE ENVIRONMENT

All the products of myrtle beach and JAMES & NICHOLSON are produced in an environmentally friendly way.

QUALITY STANDARD

The merchandise is regularly tested by certified testing institutes in the countries of production regarding the given parameter. Moreover, in cooperation with SGS, Testex, Hohenstein and other renowned institutes the quality is continually controlled.

OEKO-TEX® STANDARD 100

This standard guarantees that textile and non-textile product components pose no threat to health.



ADHERENCE TO THE REACH-REGULATIONS

We assure you that when manufacturing our myrtle beach products and JAMES & NICHOLSON textiles we meet the obligations of the REACH-regulations.

OCS STANDARD

When manufacturing garments of myrtle beach and JAMES & NICHOLSON, the Organic Content Standard is a standard for verifying and tracking the exact content of organically grown materials in a final product.



Made with 100% Organically Grown Cotton Certified by CU853836
 Made with 85% Organically Grown Cotton Certified by CU853836
 Made with 75% Organically Grown Cotton Certified by CU853836
 Made with 50% Organically Grown Cotton Certified by CU853836



NEW ITEMS

- 10_8027/8028_T-SHIRT STRIPED
- 28_8029/8030_POLO STRIPED
- 30_JN873/JN874_WORKWEAR POLO
- 36_8021/8022_SWEAT
- 38_8023/8024_HOODY
- 40_8025/8026/8026K_ZIP HOODY
- 44_MB7135_HEADBAND
- 44_MB7312_SCARF
- 45_8031_SNEAKER SOCKS
- 45_8032 SOCKS





SHIRTS_ ORGANIC WITH ATTITUDE

Fashionable, colourful or discreet:
T-shirts made of **organic cotton** in a
multitude of colours and styles **are**
always a good choice.

New **designs** in **maritime look** perfectly
round off the fashionable product line
made of high-quality **single jersey** or
slub yarn.

Produced fairly and without genetic
engineering, all the products of **this**
collection are **twice as pleasant to wear.**

Indispensable basics – **Ahoy and enjoy!**

NEW_T-SHIRT STRIPED



8027_red/white



8028_navy/white



SIZE S-3XL



SIZE XS-XXL



8027_LADIES' T-SHIRT STRIPED 8028_MEN'S T-SHIRT STRIPED

- T-shirt in maritime look with breast pocket
- 100 % combed, ring-spun organic cotton, single jersey, round neck
- Two-ply rolled hem on sleeves and waistband

- Neckband with elasthane
- Tear off!®-label
- 8027: Lightly waisted
- Outer fabric (140 g/m²): 100% cotton

8027 XS · S · M · L · XL · XXL
8028 S · M · L · XL · XXL · 3XL



red/white



atlantic/white



white/navy



navy/white

LADIES'- & MEN'S-T

8001_LADIES'-T

8002_MEN'S-T

- T-shirt with trendy roll hem
- 100% organic combed ring-spun cotton, single jersey
- Sleeves with roll hem
- Tear off!®-label
- 8001: Slightly waisted, low cut round neckline, outer fabric (120 g/m²): 100% cotton
- 8002: Round neckline, outer fabric (140 g/m²): 100% cotton

8001 XS · S · M · L · XL · XXL

8002 S · M · L · XL · XXL · 3XL



SIZE XS-XXL



8001_white

8002_navy



white

red

navy

grey-heather

black



SIZE S-3XL

T-POCKET



SIZE XS-XXL



8003_red



8004_white



8003_LADIES'-T POCKET 8004_MEN'S-T POCKET

- T-shirt with fashionable breast pocket
- 100% combed ring-spun organic cotton, single jersey
- Cuffs with elasthane
- Breast pocket with roll hem
- Tear off!®-label

- 8003: Low cut round neckline, slightly waisted, outer fabric (120 g/m²): 100% cotton
- 8004: V-neck with small cuffs, outer fabric (140 g/m²): 100% cotton

8003 XS · S · M · L · XL · XXL
8004 S · M · L · XL · XXL · 3XL

LADIES' CASUAL-T



SIZE XS-XXL



soft-grey

8005_LADIES' CASUAL-T

- Ladies' T-shirt in casual style
 - 100% combed ring-spun organic cotton, single jersey
 - Low cut round neckline
 - Cuffs with elasthane
 - Overcut shoulder
 - Short roll-up sleeves
 - Casual fit
 - Tear off!®-label
 - Outer fabric (120 g/m²): 100% cotton
- XS · S · M · L · XL · XXL



white

soft-pink



soft-grey

black



soft-green



BASIC-T



SIZE XS-XXL



SIZE S-3XL



8007_LADIES' BASIC-T 8008_MEN'S BASIC-T

- T-shirt in classic form
- 100% combed ring-spun organic cotton, single jersey
- Sleeve-cuffs with elasthane
- Tear off!®-label

- 8007: Slightly waisted, low cut round neckline, outer fabric (120 g/m²): 100% cotton
- 8008: Round neckline, outer fabric (140 g/m²): 100% cotton

8007 XS · S · M · L · XL · XXL

8008 S · M · L · XL · XXL · 3XL



GIRLS' & BOYS' BASIC-T



Made with 100%
Organically Grown Cotton
Certified by CUBS3836



SIZE XS-XXL



8007G_GIRLS' BASIC-T

8008B_BOYS' BASIC-T

- Classic T-shirt
- 100 % combed ring-spun organic cotton, single jersey
- Round neckline
- Sleeve-cuffs with elasthane
- Tear off!®-label
- 8007G: Lightly waisted
- Outer fabric (140 g/m²): 100% cotton

8007G	XS	S	M	L	XL	XXL
	98/104	110/116	122/128	134/140	146/152	158/164
8008B	XS	S	M	L	XL	XXL
	98/104	110/116	122/128	134/140	146/152	158/164



SLUB-T

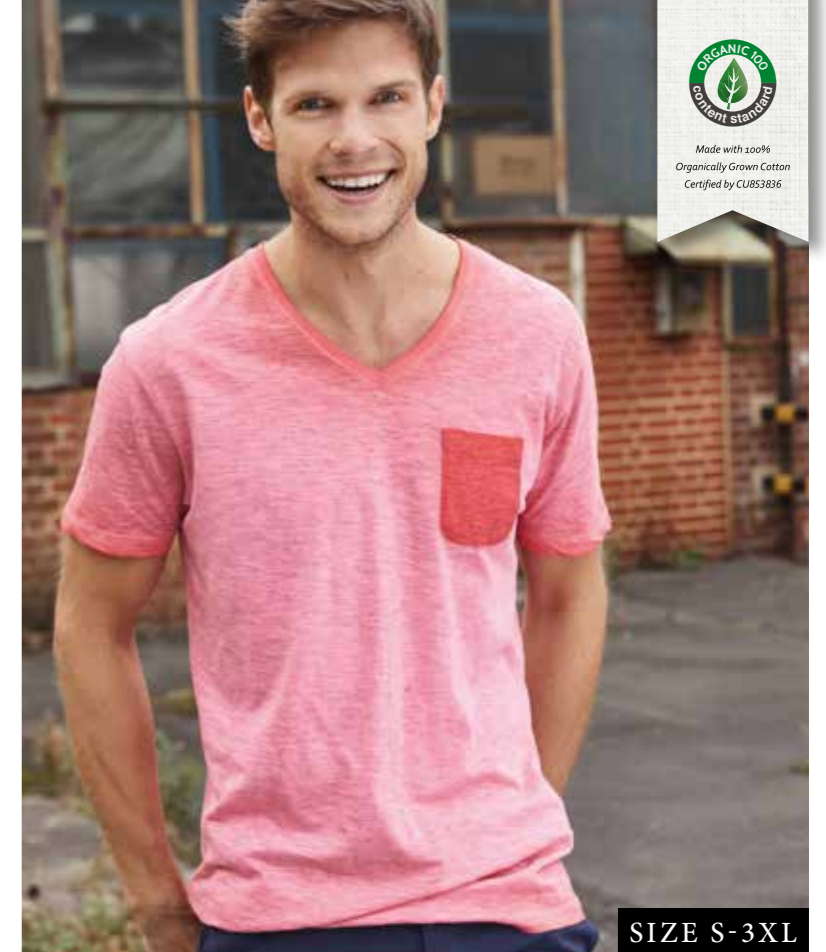
8015_LADIES' SLUB-T

8016_MEN'S SLUB-T

- T-shirt in vintage look
- Single jersey made of slub yarn and combed ring-spun organic cotton
- Elaborate Spray Print technique
- 8015: Two-ply roll edge on neckline, sleeves and waistband, lightly waisted, outer fabric (130 g/m²): 100% cotton
- 8016: V-neck, sleeve-cuffs with elasthane, breast pocket in contrasting colour, outer fabric (150 g/m²): 100% cotton

8015 XS · S · M · L · XL · XXL

8016 S · M · L · XL · XXL · 3XL



Made with 100%
Organically Grown Cotton
Certified by CUBS3836

SIZE S-3XL



8015_graphite

8016_chili

soft-pink

chili

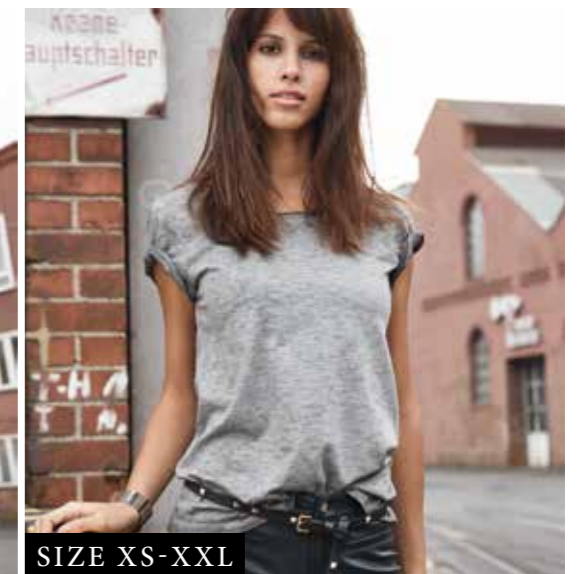
light-grey

horizon-blue

denim

graphite

dusty-olive



SIZE XS-XXL

LADIES' SLUB-TOP



SIZE XS-XXL



chili

8017_LADIES' SLUB-TOP

- Ladies' tank top in vintage look
- Single jersey made of slub yarn and combed ring-spun organic cotton
- Elaborate Spray Print technique
- Two-ply roll hem
- Narrow bands on neckline and armlines
- Lightly waisted
- Outer fabric (130 g/m²): 100% cotton

XS · S · M · L · XL · XXL



soft-pink chili light-grey horizon-blue



denim graphite dusty-olive





POLOS_ CLASSICS WITH STYLE

Feel good, look good: polo shirts by JAMES & NICHOLSON are **timeless classics** which suit any type of occasion.

Tasteful details such as **breast pockets and side slits** will impress you with **unfailing casualness**.

All the poloshirts have been **independently certified** and have been produced under **controlled working conditions**. On top of that, this collection is extremely pleasant to wear.

Everyday-wear with a casual touch – **Say yes to a timeless classic!**

NEW_POLO STRIPED

SIZE XS-XXL



SIZE S-3XL



8029_navy/white



8030_atlantic/white



red/white
atlantic/white
white/navy
navy/white

8029_LADIES' POLO STRIPED 8030_MEN'S POLO STRIPED

- Polo shirt in maritime look with breast pocket
- Fine piqué quality made of 100% combed, ring-spun organic cotton
- Knitted polo collar
- Sleeve cuffs, breast pocket, buttons and button-placket on the inside in contrasting colour
- Side slits

- Tear off!®-label
- 8029: waisted form, 5 buttons
- 8030: 3 buttons
- Outer fabric (180 g/m²): 100% cotton

8029 XS · S · M · L · XL · XXL
8030 S · M · L · XL · XXL · 3XL

NEW_WORKWEAR POLO



60° TUMBLE DRY
SIZE XS-6XL



JN873_orange



JN874_carbon

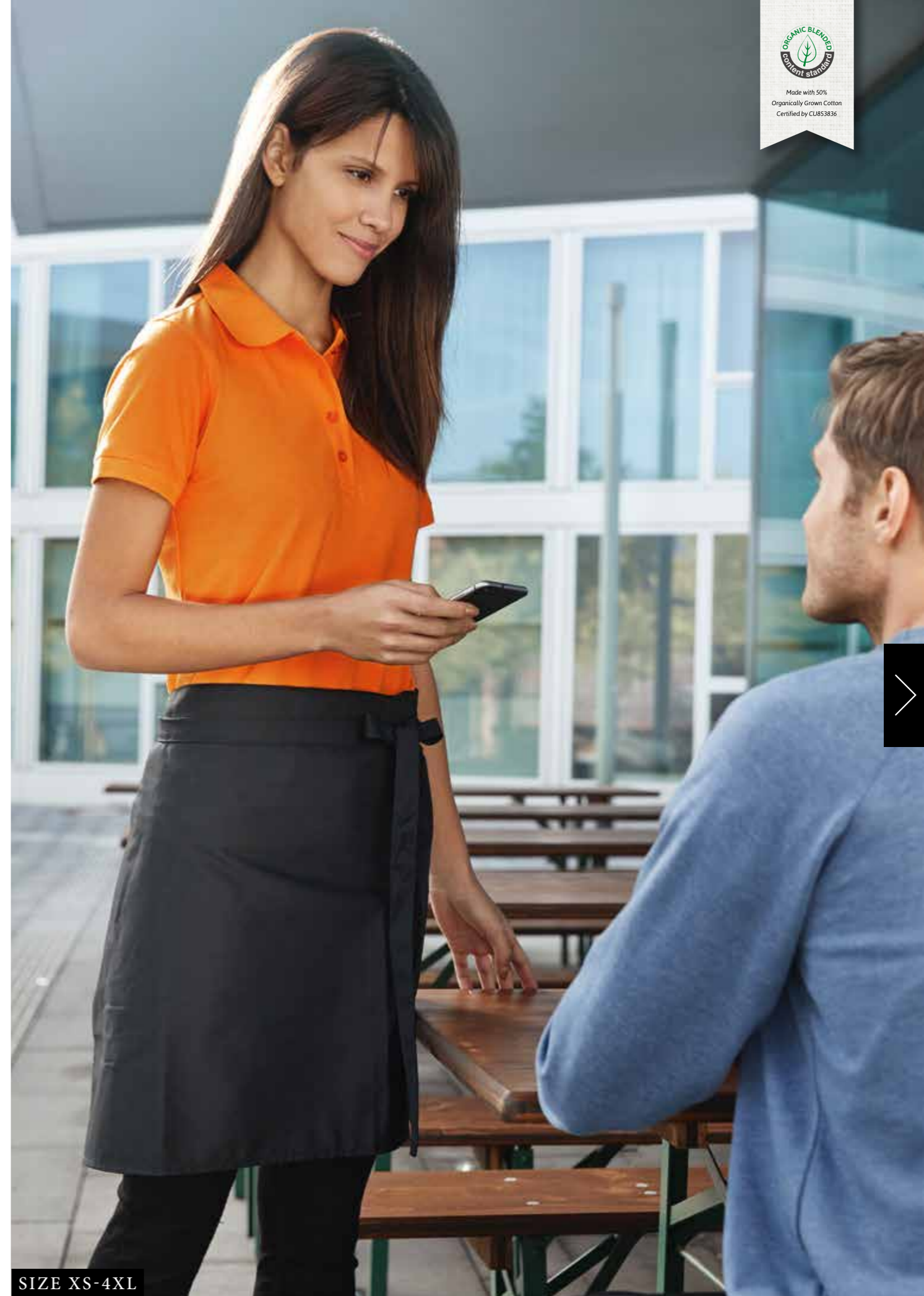
JN873_LADIES' BIO WORKWEAR POLO JN874_MEN'S BIO WORKWEAR POLO

- Easy-care, durable polo shirt
- Mixed materials made of combed, ring-spun organic cotton and polyester for optimum shape-retention and washability
- Knitted polo collar and sleeve cuffs
- Necktape
- JN873: Button placket with 4 buttons, side slits

- JN874: Button placket with 3 buttons
- Washable up to 60 degrees, suitable for tumble drying
- Outer fabric (200 g/m²): 50% cotton, 50% polyester

JN873 XS · S · M · L · XL · XXL · 3XL · 4XL

JN874 XS · S · M · L · XL · XXL · 3XL · 4XL · 5XL · 6XL



SIZE XS-4XL



BASIC POLO

SIZE S-3XL



8009_LADIES' BASIC POLO

8010_MEN'S BASIC POLO

- Classic poloshirt
- Fine piqué made of 100% combed ring-spun organic cotton
- Knitted polo collar and sleeve cuffs
- Buttons tone in tone, side slits
- Tear off!®-label
- 8009: waisted, 4 buttons
- 8010: 2 buttons
- Outer fabric (180 g/m²): 100% cotton

8009 S · M · L · XL · XXL

8010 S · M · L · XL · XXL · 3XL



SIZE S-XXL





SWEATS_ MUST-HAVE STREETWEAR

Ultra-comfortable, stylish and **extremely pleasant to wear**: the new sweats and hoodies will make you feel good.

They are **extremely comfortable** thanks to a **characteristic hood, kangaroo pocket, raglan sleeves, French terry** and **soft, ring-spun cotton**.

All our sweats and hoodies have been **certified** according to **OEKO-Tex Standard 100**. All of their components are harmless to health.

Fashion favourites with streetwear character – **Urban flair at its best!**

NEW_SWEAT



8021_burgundy-melange 8022_royal-heather



SIZE S-5XL



SIZE XS-3XL



8021_LADIES' SWEAT 8022_MEN'S SWEAT

- Classic sweatshirt with raglan sleeves
- High-quality French terry, 85% combed, ring-spun organic cotton
- Classic round neck, necktape
- Collar and sleeve-bands with elasthane
- Collar patch
- Tear off!®-label
- 8021: lightly waisted
- Outer fabric (300 g/m²): 85% cotton, 15% polyester

8021 XS · S · M · L · XL · XXL · 3XL
8022 S · M · L · XL · XXL · 3XL · 4XL · 5XL



SIZE S-5XL



8023_black-heather



8024_glacier-melange



8023_LADIES' HOODY
8024_MEN'S HOODY

- Hooded sweatshirt with raglan sleeves
- High-quality sweat fabric with roughened inside
- 85% combed, ring-spun organic cotton
- Two-layer hood with drawcord
- Lateral dividing seams at the front, kangaroo pocket
- Sleeve-bands with elasthane
- Tear off!®-label
- 8023: lightly waisted
- Outer fabric (300 g/m²): 85% cotton, 15% polyester

8023 XS · S · M · L · XL · XXL · 3XL

8024 S · M · L · XL · XXL · 3XL · 4XL · 5XL

NEW_HOODY



SIZE XS-3XL

NEW_ZIP HOODY



SIZE XS-XXL



SIZE S-5XL



SIZE XS-3XL



8025_LADIES' ZIP HOODY 8026_MEN'S ZIP HOODY

- Hooded sweat jacket with zip
- High-quality French terry
- 85% combed, ring-spun organic cotton
- Two-layer hood with drawcord
- Lateral dividing seams at the front, kangaroo pocket
- Sleeve-bands with elasthane
- YKK-zip
- Tear off!®-label
- 8025: lightly waisted
- Outer fabric (300 g/m²): 85% cotton, 15% polyester

8025 XS · S · M · L · XL · XXL · 3XL

8026 S · M · L · XL · XXL · 3XL · 4XL · 5XL



8025_ash

8026_royal-heather



8026K_acid-yellow

8026K_glacier-melange



8026K_CHILDREN'S ZIP HOODY

- Hooded sweat jacket with zip
- High-quality French terry
- 85% combed, ring-spun organic cotton
- Two-layer hood without cord
- Lateral dividing seams at the front, kangaroo pocket
- Sleeve-bands with elasthane
- YKK-zip
- Tear off!®-label
- Outer fabric (300 g/m²): 85% cotton, 15% polyester

XS S M L XL XXL
98/104 110/116 122/128 134/140 146/152 158/164





ACCESSORIES_ COMPLETE THE LOOK

Cotton from head to toe: myrtle beach **accessories** made of **organic cotton** complement every product to perfection.

High-quality **headwear**, a light **summer scarf** and matching **socks** complete the outfit and set stylish accents.

Produced in an environmentally friendly way - we can say with a clear conscience that these **accessories** add that **certain something to every outfit**.

Ideal for casual urban looks -
Essential accessories have it all!



Made with 100%
Organically Grown Cotton
Certified by CU853836



NEW_BIO COTTON SCARF



MB7312_BIO COTTON SCARF

- Pleasantly warm cotton scarf
 - Short, fine fringe along the edges of the scarf
 - Fashionable colourways
 - Outer fabric (65 g/m²): 100% cotton
- 180 x 50 cm

NEW_BIO SOCKS



8032_BIO SOCKS

- Classic socks with a high content of organic cotton
 - Elastic cuff with Lycra®
 - Flat toe seam
 - Reinforced toe and heel part
 - Outer fabric: 75% cotton, 23% polyamide, 2% elasthane
- 35-38 · 39-41 · 42-44 · 45-47



NEW_BIO COTTON HEADBAND



MB7135_BIO COTTON HEADBAND

- Extra-wide headband
 - 100% combed, ring-spun organic cotton, single jersey
 - Tear off!®-label
 - Outer fabric (140 g/m²): 100% cotton
- One Size



Tear off
LABEL



NEW_BIO SNEAKER SOCKS



8031_BIO SNEAKER SOCKS

- Classic short socks with a high content of organic cotton
 - Elastic cuff with Lycra®
 - Flat toe seam
 - Reinforced toe and heel part
 - Outer fabric: 75% cotton, 23% polyamide, 2% elasthane
- 35-38 · 39-41 · 42-44 · 45-47



Made with 100%
Organically Grown Cotton
Certified by CUBS3836

BIO COTTON BEANIE



MB7113_BIO COTTON BEANIE

- Fashionable beanie in casual style
- Narrow roll hem
- 100% combed ring-spun organic cotton, single jersey
- Tear off!®-label
- Outer fabric (120 g/m²): 100% cotton

One Size



black-heather

light-denim-melange



carmine-red-melange



wine



light-denim-melange



navy



grey-heather



graphite



black



black-heather



KEEN ON MORE ORGANIC COTTON?

The JAMES & NICHOLSON **SPA COLLECTION**
combines wellness with sustainability.

